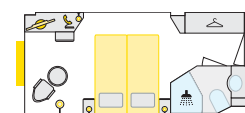


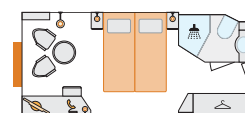


# A - ROSA DONNA

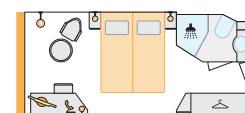
**SHIPYARD:** Neptun Werft GmbH, Warnemünde  
**PASSENGERS:** max. 242 guests  
**CABINS:** 100 outside cabins  
**LENGTH/WIDTH:** 124.5 m/14.4 m  
**SPEED:** max. 24 km/h  
**POWER:** 2 x 800 kW, a total of 2,174 PS  
**YEAR OF CONSTRUCTION:** 2002  
**REFURBISHED:** 2019  
**FLAG:** Germany



**S** 2-bed outside cabin, 14.5m<sup>2</sup>, deck 1



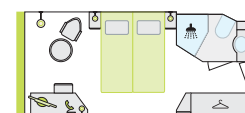
**A** 2-bed outside cabin, 15.5m<sup>2</sup>, deck 1



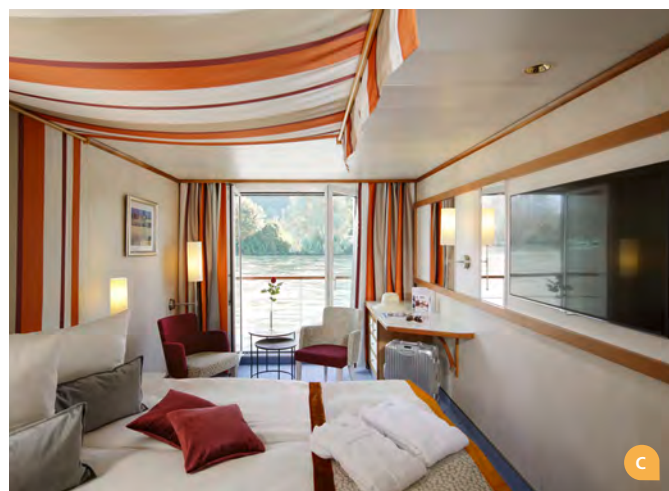
**C** 2-bed outside cabin with Juliette balcony, 16m<sup>2</sup>, deck 2



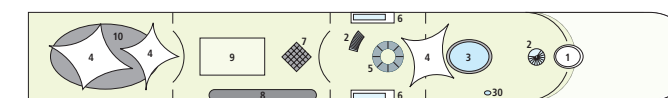
**A** 2-bed outside cabin with extra bed, 15.5m<sup>2</sup>, deck 1



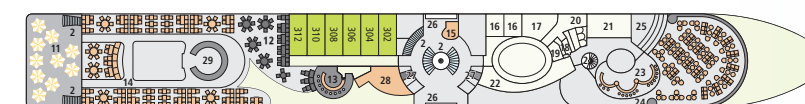
**B** 2-bed outside cabin with panorama window, 16.5m<sup>2</sup>, deck 3



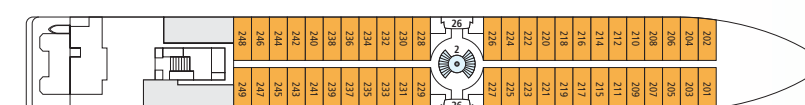
DECK 4 (SUN DECK)



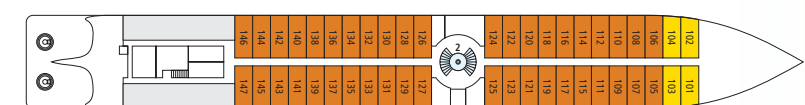
DECK 3



DECK 2



DECK 1



## DECK PLAN

- |                             |                      |                                     |
|-----------------------------|----------------------|-------------------------------------|
| 01 WHEELHOUSE               | 12 DAY LOUNGE        | 23 BAR                              |
| 02 STAIRS                   | 13 CAFÉ/BAR          | 24 PANORAMA LOUNGE                  |
| 03 SWIMMING POOL            | 14 MARKET RESTAURANT | 25 STAGE/DANCE FLOOR                |
| 04 AWNINGS                  | 15 RECEPTION         | 26 FOYER                            |
| 05 LIGHT DOME               | 16 MASSAGE/BEAUTY    | 27 TOILETS                          |
| 06 GANGWAYS                 | 17 FINNISH SAUNA     | 28 ONBOARD SHOP                     |
| 07 GIANT CHESSBOARD         | 18 ORGANIC SAUNA     | 29 GOURMET BUFFET WITH LIVE COOKING |
| 08 SHUFFLEBOARD             | 19 CHANGING ROOMS    | 30 OUTDOOR SHOWER                   |
| 09 PUTTING GREEN/CRAZY GOLF | 20 MASSAGE SHOWERS   |                                     |
| 10 BAR & GRILL STATION      | 21 RELAXATION AREA   |                                     |
| 11 RESTAURANT OUTDOOR AREA  | 22 GYM               |                                     |

The windows can only be opened in the cabin category of 2-bed outside cabin C with Juliette balcony.

### THOSE IN NEED OF ASSISTANCE AND PEOPLE WITH LIMITED MOBILITY:

The decks of this ship are only accessible via stairs, which may mean there are some limitations. For personal consultation, please call the *A-ROSA Service Center* at +49 (0)381 202 6001.

### TIP FOR FAMILIES:

This ship has cabins with an extra bed on deck 1 in the following cabins of category A: 107 | 108 | 124 | 125 | 126 | 127 | 142 | 143 | 144 | 145.



Experience the ship with our 360° virtual ship tour:  
[www.arosa-cruises.com/danubeships](http://www.arosa-cruises.com/danubeships)

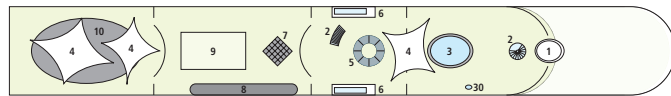
# A-ROSA BELLA

IDENTICAL IN CONSTRUCTION TO  
A-ROSA MIA, A-ROSA RIVA

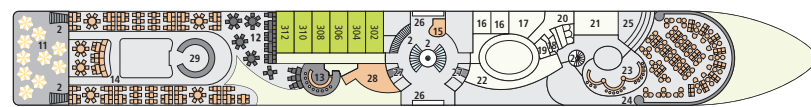
SHIPYARD: Neptun Werft GmbH, Warnemünde  
PASSENGERS: max. 242 guests  
CABINS: 100 outside cabins per ship  
LENGTH/WIDTH: 124.5 m/14.4 m  
SPEED: max. 24 km/h  
POWER: 2 x 800 kW, a total of 2,174 PS  
YEAR OF CONSTRUCTION: 2002 A-ROSA BELLA,  
2003 A-ROSA MIA, 2004 A-ROSA RIVA  
FLAG: Germany (A-ROSA RIVA: Switzerland)



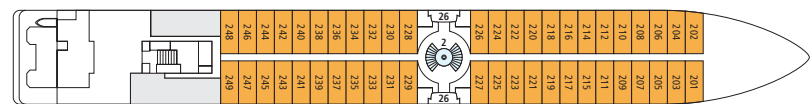
DECK 4 (SUN DECK)



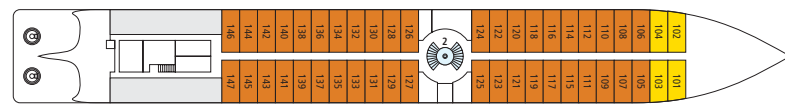
DECK 3



DECK 2

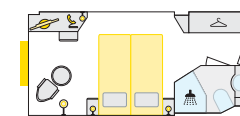


DECK 1

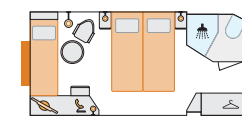


## DECK PLAN

- 01 WHEELHOUSE
- 02 STAIRS
- 03 SWIMMING POOL
- 04 AWNINGS
- 05 LIGHT DOME
- 06 GANGWAYS
- 07 GIANT CHESSBOARD
- 08 SHUFFLEBOARD
- 09 PUTTING GREEN/CRAZY GOLF
- 10 BAR & GRILL STATION
- 11 RESTAURANT OUTDOOR AREA
- 12 DAY LOUNGE
- 13 CAFÉ/BAR
- 14 MARKET RESTAURANT
- 15 RECEPTION
- 16 MASSAGE/BEAUTY
- 17 FINNISH SAUNA
- 18 ORGANIC SAUNA
- 19 CHANGING ROOMS
- 20 MASSAGE SHOWERS
- 21 RELAXATION AREA<sup>1</sup>
- 22 GYM
- 23 BAR
- 24 PANORAMA LOUNGE
- 25 STAGE/DANCE FLOOR
- 26 FOYER
- 27 TOILETS
- 28 ONBOARD SHOP
- 29 GOURMET BUFFET WITH LIVE COOKING
- 30 OUTDOOR SHOWER



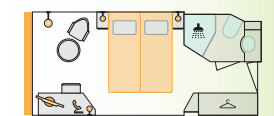
**S** 2-bed outside cabin, 14.5m<sup>2</sup>, deck 1



**A** 2-bed outside cabin with extra bed, 15.5m<sup>2</sup>, deck 1



**B** 2-bed outside cabin with panorama window, 16.5m<sup>2</sup>, deck 3



**C** 2-bed outside cabin with Juliette balcony, 16m<sup>2</sup>, deck 2

The windows can only be opened in the cabin category of 2-bed outside cabin C with Juliette balcony.

### THOSE IN NEED OF ASSISTANCE AND PEOPLE WITH LIMITED MOBILITY:

The decks of the ships are only accessible via stairs, which may mean there are some limitations.

For personal consultation, please call the *A-ROSA Service Center* at +49 (0)381 202 6001.

 Experience the ship with our 360° virtual ship tour:  
[www.rosa-cruises.com/danubeships](http://www.rosa-cruises.com/danubeships)

<sup>1</sup>Structural feature of the A-ROSA RIVA.



# WELCOME ON BOARD A-ROSA DONNA, A-ROSA BELLA, A-ROSA MIA, AND A-ROSA RIVA



## ESCAPING EVERYDAY LIFE AT ITS BEST: ON BOARD A-ROSA

- Spacious sun deck with relaxed atmosphere
- Sufficient recliners, sunshades and awnings
- Heated outdoor pool with counter current system
- Shuffleboard, putting green and giant chess board
- Outdoor restaurant on the aft deck
- Coffee specialities, wines and refreshments at the café bar
- Panorama lounge with bar and dance floor
- Casual dress code



## ENJOY YOURSELF AND LET YOUR PALATE EXPLORE NEW TASTES: CULINARY VARIETY

- Indulge all day, every day:
  - Daily varied gourmet buffets, plus the choice at dinner between a la carte and gourmet buffet dining
  - Freshly prepared regional and seasonal specialities
  - In the afternoon: cake buffet with coffee and tea
- High-quality drinks included throughout the day
- Flexible dining: free choice of tables in the market restaurant, outdoor restaurant and lounge, and dine whenever you like during restaurant opening hours
- Wine list adapted to the region
- BBQ buffet on the aft deck (depending on weather)



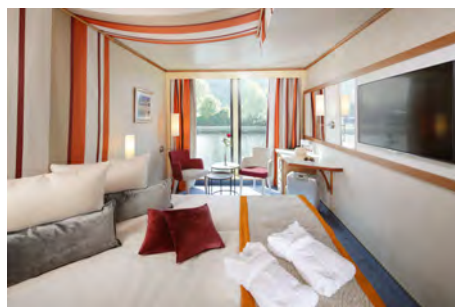
## FEELING AT HOME WHILST ON HOLIDAY: THE CABINS

- Spacious, comfortable cabins, mainly with Juliette balcony
- Elegant design and high-quality materials provide a feel-good atmosphere
- Facilities: safe, air conditioning, TV, fly screen, hair dryer, shower / vacuum toilet, sauna towel, woolen blanket, telephone, bathrobe
- Outside cabins: 14.5 m<sup>2</sup> - 16.5 m<sup>2</sup>



## TRULY RELAX WHILE ON HOLIDAY: SPA-ROSA

- Wide range of beauty and body treatments with high-quality BABOR products
- Professionally trained spa and beauty team
- Panorama sauna and organic sauna
- Gym with modern cardio equipment: Elliptical trainer, bicycle ergometer and treadmill
- Massage showers and relaxation area



## ARRIVAL AND DEPARTURE

- Cruises start and end in Engelhartzell or Vienna
- By rail travel
- By car
- From/to Vienna by plane