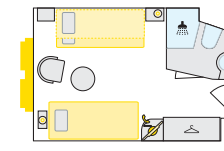


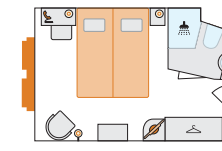
# A-ROSA AQUA

IDENTICAL IN  
CONSTRUCTION TO  
A-ROSA BRAVA

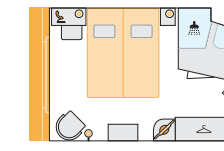
**SHIPYARD:** Neptun Werft GmbH, Warnemünde  
**PASSENGERS:** max. 202 guests  
**CABINS:** 99 outside cabins per ship  
**LENGTH/WIDTH:** 135 m/11.4 m  
**SPEED:** max. 22 km/h  
**POWER:** 4 x 331 kW, a total of 1,800 PS  
**YEAR OF CONSTRUCTION:** 2009 A-ROSA AQUA,  
 2011 A-ROSA BRAVA  
**FLAG:** Germany



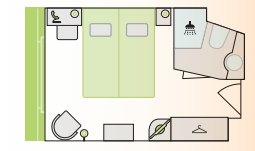
**S** 2-bed outside cabin with extra bed, 14.5m², deck 1



**A** 2-bed outside cabin, 14.5m², deck 1

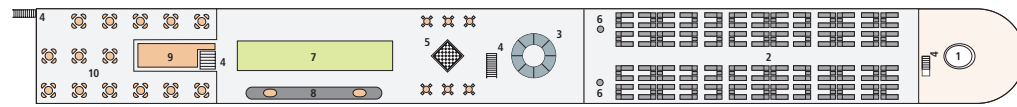


**C** 2-bed outside cabin with Juliette balcony, 14.5m², deck 2

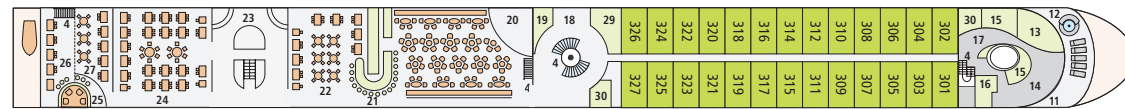


**D** 2-bed outside cabin with Juliette balcony, 14.5m², deck 3

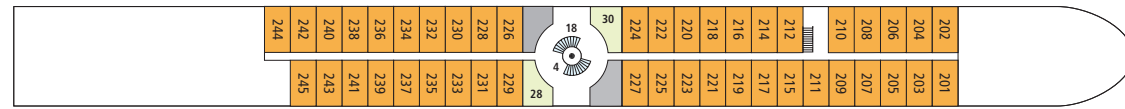
## DECK 4



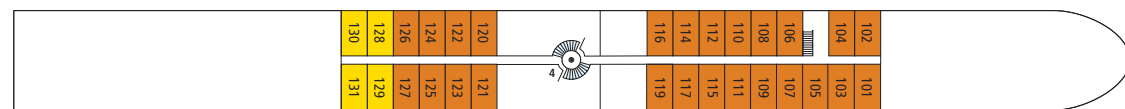
## DECK 3



## DECK 2



## DECK 1



## DECK PLAN

- |                                 |                            |                                     |
|---------------------------------|----------------------------|-------------------------------------|
| 01 WHEELHOUSE                   | 12 WHIRLPOOL               | 23 GOURMET BUFFET WITH LIVE COOKING |
| 02 RECLINERS AND AWNINGS        | 13 GYM                     | 24 MARKET RESTAURANT                |
| 03 LIGHT DOME                   | 14 SPA RELAXATION AREA     | 25 P'TIT BAR (INDOOR/OUTDOOR)       |
| 04 STAIRS                       | 15 MASSAGE/BEAUTY          | 26 RESTAURANT OUTDOOR AREA          |
| 05 GIANT CHESSBOARD             | 16 SANARIUM                | 27 WINE BAR                         |
| 06 OUTDOOR SHOWER               | 17 SPA RECEPTION           | 28 RECEPTION                        |
| 07 PUTTING GREEN/CRAZY GOLF     | 18 LOBBY                   | 29 ONBOARD SHOP                     |
| 08 SHUFFLEBOARD                 | 19 EXCURSION COUNTER       | 30 TOILETS                          |
| 09 MOBILE BAR AND GRILL STATION | 20 LOUNGE WITH DANCE FLOOR |                                     |
| 10 OUTDOOR RESTAURANT           | 21 BAR                     |                                     |
| 11 SPA OUTDOOR AREA             | 22 CAFE/RESTAURANT         |                                     |

The windows can only be opened in the cabin category of 2-bed outside cabin C and D with Juliette balcony.

### TIP FOR FAMILIES:

Each deck (cabin category A, C & D) has two cabins available with a connecting door for use as a family cabin. Cabin numbers on request.

### THOSE IN NEED OF ASSISTANCE AND PEOPLE WITH LIMITED MOBILITY:

The decks of this ship are only accessible via stairs, which may mean there are some limitations. For personal consultation, please call the *A-ROSA Service Center* at +49 (0)381 202 6001.



Experience the ship with our 360° virtual ship tour:  
[www.rosa-cruises.com/rhineships](http://www.rosa-cruises.com/rhineships)

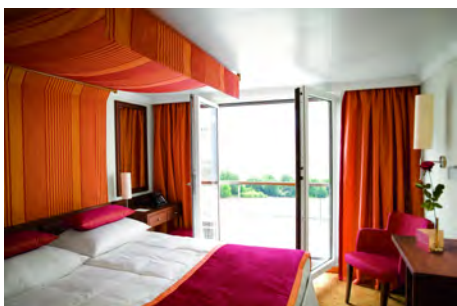
# WELCOME ON BOARD

## A-ROSA AQUA AND A-ROSA BRAVA



### ESCAPING EVERYDAY LIFE AT ITS BEST: ON BOARD A-ROSA

- Spacious sun deck with relaxed atmosphere
- Sufficient recliners, sunshades and awnings
- Whirlpool and SPA outdoor area
- Shuffleboard, putting green and giant chess board
- Beverage buffet on the sun deck
- P'tit bar with service on the aft deck
- Lounge with bar and dance floor
- Casual dress code



### ENJOY YOURSELF AND LET YOUR PALATE EXPLORE NEW TASTES: CULINARY VARIETY

- Indulge all day, every day:
  - Daily varied gourmet buffets, plus the choice at dinner between a la carte and gourmet buffet dining
  - Freshly prepared regional and seasonal specialities
  - In the afternoon: cake buffet with coffee and tea
- High-quality drinks included throughout the day
- Flexible dining: free choice of tables in the market and café restaurant, outdoor restaurant and wine bar
- Wine list adapted to the region
- BBQ buffet on the aft deck (depending on weather)



### FEELING AT HOME WHILST ON HOLIDAY: THE CABINS

- Spacious, comfortable cabins, mainly with Juliette balcony
- Elegant design and high-quality materials provide a feel-good atmosphere
- Facilities: safe, air conditioning, TV, fly screen, hair dryer, shower / vacuum toilet, sauna towel, woolen blanket, telephone, bathrobe



### TRULY RELAX WHILE ON HOLIDAY: SPA-ROSA

- Wide range of beauty and body treatments with high-quality BABOR products
- Professionally trained spa and beauty team
- Sanarium with panoramic view
- Gym with modern cardio equipment: Elliptical trainer and bicycle ergometer
- Massage showers and relaxation area
- Outdoor area with whirlpool, recliners and panoramic view



### ARRIVAL AND DEPARTURE

- Most cruises start and end in Cologne
- By German rail travel
- By car
- From/to Cologne by plane